



Welcome to Reception

September
2023

Learn, Know, Progress, Shine!



Welcome To Long Knowle Primary School

Introductions to Staff

Starting school is a very special milestone. It's a new and exciting time in your child's new life.

They will make new friends, share new experiences, learn new skills and become more independent. It's also an emotional time for parents and carers. Our aim is to work in partnership to ensure that starting school is a positive experience for all involved.



Preparing for school

To help your child prepare for school, you could:

Encourage them to dress and undress themselves.

Encourage them to use the toilet, wipe themselves and wash their hands.

Practice making marks with pencils, paint and sticks.

Practise snipping paper and spaghetti with scissors.

Complete jigsaws and play games that involve sharing.

Practise packing their school bag and the journey to school.

Share starting school stories together.





What your child needs



✓ We provide a clear plastic book bag -
You can also purchase a Long Knowle book bag on the school website.

✓ PE kit (please put name inside)

✓ A named water bottle. Children will also be able to have free milk and fruit at snack time. (Please make sure your child can recognise their bottle)





School Uniform



Long Knowle
Primary School

Our School

2022 - 2023

Safeguarding

Curriculum

Parents

Children

Contact Us

www.longknowleprimary.co.uk



COUNTY SPORTS & SCHOOLWEAR

- ✓ Green sweatshirt or cardigan with logo
- ✓ Grey school-style trousers or grey skirt or grey shorts (summer)
- ✓ Plain white or logo green polo shirt
- ✓ Green checked dress (summer)
- ✓ Black, white or grey socks/tights, black shoes.
- ✓ Dark green or black hair ribbon/bobble/hair band.

Learn, Know, Progress, Shine!



School Uniform



Learn, Know, Progress, Shine!



School Uniform – PE kit

✓ PE kit can be worn on PE days – usually Tuesdays.

✓ Children can wear their school jumper or cardigan on top.

✓ Black or navy-blue shorts, plain white teeshirt (without logo, not a football shirt), black pumps.

✓ In colder weather children may bring in a plain black or navy track suit. Trainers can be brought in for outdoor PE lessons.

✓ Long hair must be tied up for PE – please provide a bobble

✓ We do have pre-loved uniform for a small cost



The Reception School Day



Is very flexible!

Learn, Know, Progress, Shine!



A typical school day

Morning Session

8.40-8:45am- Reception Door will be open and children will hang up their coats and start their morning work.

8:50 onwards - register taken, lunch choices, visual timetable

9.00am - Maths Meeting

09.10am- Twinkl Phonics input

9.40am-9.55am-Literacy input

09.55-10.05am Snack

10.05am-11.30am Child Initiated Learning-

Indoor/Outdoor Free Flow

Teacher Directed Activities

11.30am-11.45am Shared story/Singing/Toilet Routine

11.45am-12.45pm- Lunch Time



Learn, Know, Progress, Shine!

School Lunches

- Every child is entitled to a free school dinner. Our school meals are nutritious and children have a choice of:
 - Hot meal - vegetarian or not
 - Jacket potato with cheese or beans
 - Choice of sandwiches
 - Pudding or fruit
- However, if your child prefers a packed lunch, you can provide this also.
- Over the Summer holiday please practice holding cutlery/ opening closing their lunchbox.



Learn, Know, Progress, Shine!



Afternoon Session

- 12.45pm-1.00pm- Registration , DEAR time (Story time),
 - 1.00- 1.20pm- Power Maths
 - 1.20pm-2.45pm Topic/Physical Development/Music
Child Initiated Learning- Indoor / Outdoor Free Flow
 - 2.45pm-3.00pm Kinetic letters handwriting
 - 3.15pm-Home Time (We open the doors at 3.10 for the first few weeks)
- Please be prompt when picking up your child at the end of the day. If your reception child has older siblings, we ask that you pick your reception child up first.



Learn, Know, Progress, Shine!



There are 7 areas of learning that shape the educational programme provided for Early Years. They are all equally important and are interconnected.

- Communication and Language
- Personal Social and Emotional Literacy
- Literacy
- Mathematics
- Creative Development
- Understanding the World
- Physical Development



Learn, Know, Progress, Shine!



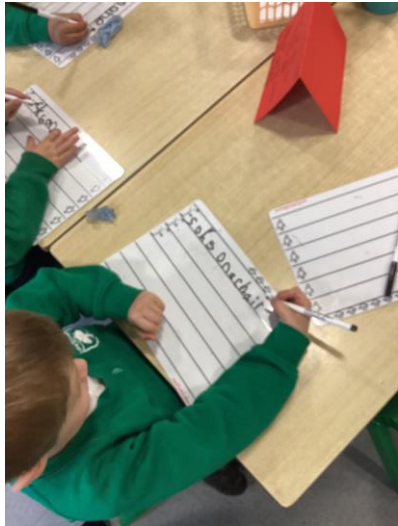
How will the children learn in Reception?

Children learn through play.

Play is their work.

Children absorb new information and concepts if learning is presented through fun, creative, exploratory experiences.

Learning is personalised, considering their interests and needs.



Learn, Know, Progress, Shine!



Supporting Learning at Home

Spend time together!



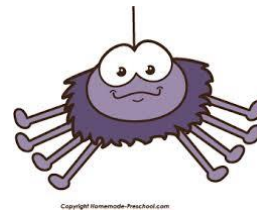
Share their home reading book at least three times a week for at least 10 minutes.

Practise their sounds and tricky words.

Practise counting and singing number songs.



Learn, Know, Progress, Shine!





Sharing Information

You can contribute to your child's learning profile

Please tell us what your child is learning to do outside of school, their interests and how they are developing day by day.



How?

By emailing us using our reception email - More information in September.



Jot it on a post-it note. Or tell us at the door.



Learn, Know, Progress, Shine!



N, Pro

Communication

- Marvellous Me- an app for families to be kept up to date with lots of positives from your child's week.
- If you are not signed up please do ask a member of staff for a sheet at the end of the meeting.
- We use Microsoft Sway to share our newsletter
- We send emails and text reminders. Please keep all details up to date and let the office know when things change.



— Attendance

- It is important your child attends school every day.
- If they are not well enough to come to school - please ring/email the school office as soon as possible - preferably by 9:00am
- We will text or contact to find out where your child is.
- Part of our safeguarding role as a school.
- Keep school updated.





Attendance - Leave of absence

- If your child has a medical appointment - please let office staff know. We ask for an appointment letter/card - this is to update our registers.
- Leave of absence - holiday requests require a form to be completed.
- They are not granted but they enable school to know if your child will not be in school on a certain date.





Learn, Know, Progress, Shine!



— Supporting Families

- Sometimes we know that things can be tough.
- Things can go wrong and sometimes families and children need support.
- Family Support
- Mrs Cook and Ms Roberts can offer support for families and children in school.
- Please talk to us as a school so we can offer support to your child and family.



Learn, Know, Progress, Shine!



FOLK- Friends of Long Knowle

We are a team of friendly family members and school staff who aim to raise vital funds to support our children and run exciting events.

If you would like to be part of the FOLK team or can spare time to support us at any future events please let Mrs Tew know at the end.

EVERYONE can support us by signing up to easy fundraising using the QR code.